

BLM LIBRARY



88026131

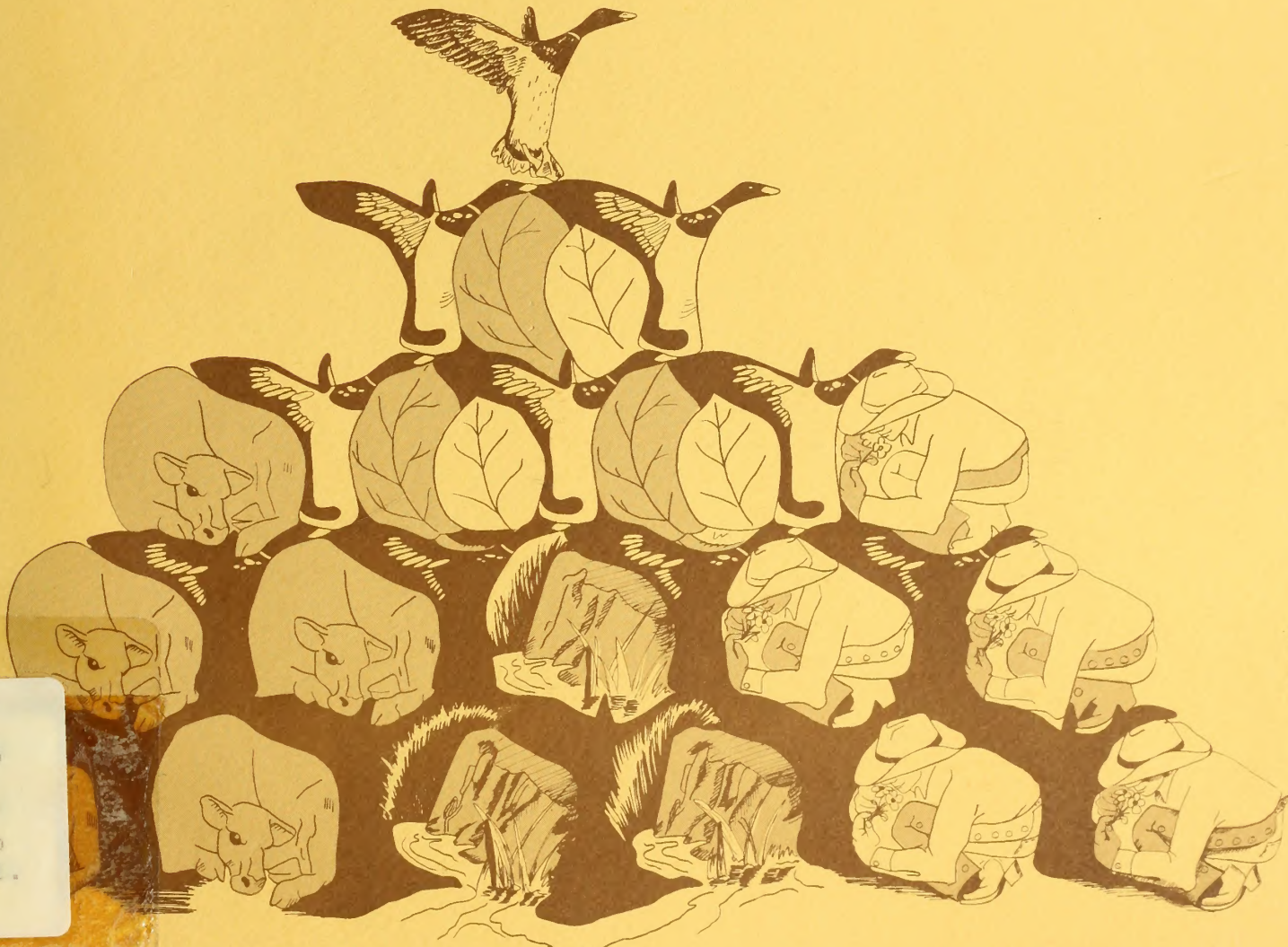


Prineville District Office
P.O. Box 550
Prineville, Oregon 97754



Rangeland Program Summary (RPS) Record of Decision

Brothers Grazing Environmental Impact Statement Area



SF
85.35
.07
B76
1982b
Suppl.

88026/31

SF
85.35

IN REPLY REFER TO '07
B76
BROT 1982b
.54
SUP Suppl



United States Department of the Interior

BUREAU OF LAND MANAGEMENT

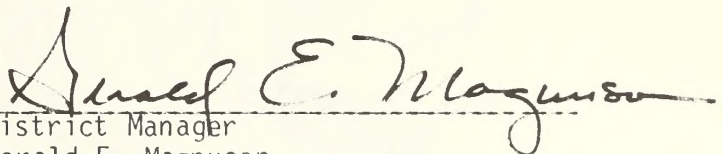
The Brothers Rangeland Program Summary (RPS) and Record of Decision is enclosed for your review. This document is the result of a planning and environmental statement process that has been ongoing since 1981 for 1.1 million acres of public land in Crook, Deschutes and Lake Counties.

The RPS contains grazing decisions to be implemented in most of the allotments in this area. In some allotments, a final decision could not be made at this time because consultation with the affected livestock operator is still continuing. Decisions regarding livestock grazing in these allotments will be made as soon as consultation is completed. These decisions, as well as progress made in the allotments where management or projects have been implemented, will be discussed in future RPS updates to be published periodically.

Release of this document serves as public notice of the proposed range management program and will be the start of a 30 day comment period. If you feel that you will be adversely affected by the decisions for a particular allotment(s) contained in this RPS and wish to protest or appeal the decision, you must notify the Prineville BLM District Manager in writing which allotment decision(s) adversely affect you before the close of the comment period.

Thank you for your interest in public land resource management in the Brothers area. Please feel free to contact us if you have any questions on the RPS.

Sincerely yours,


District Manager
Gerald E. Magnuson

Bureau of Land Management
Library
Bldg. 50, Denver Federal Center
Denver, CO 80225

Prepared by
Bureau of Land Management
Department of the Interior

BROT
.54
SUPP

summ.

Bureau of Land Management
Library
Bldg. 50, Denver Federal Center
Denver, CO 80225

Rangeland Program Summary (RPS) Record of Decision

Brothers Grazing Environmental Impact Statement Area

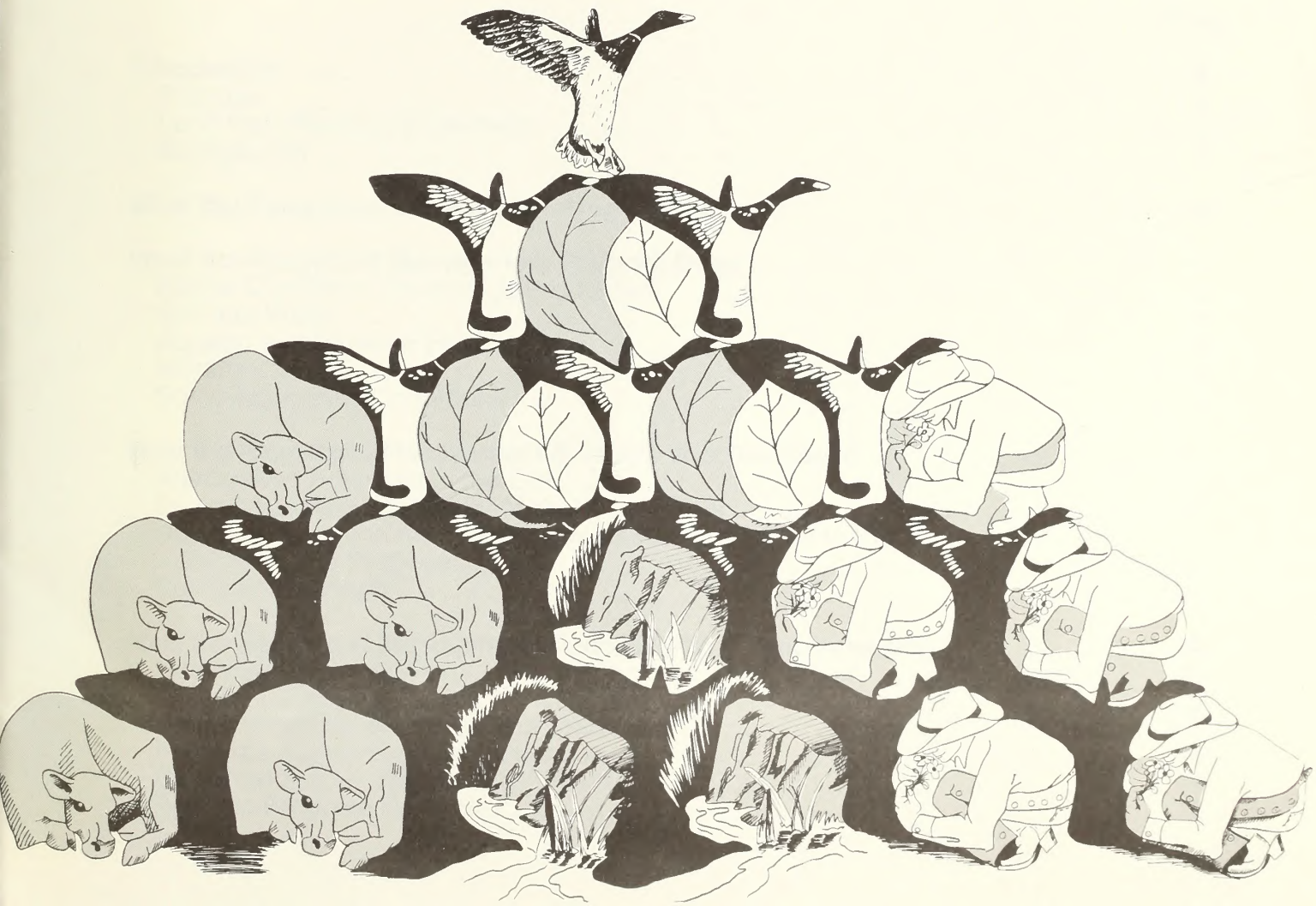


Table of Contents

	Page
Introduction	1
Purpose	1
Land Use Planning Objectives	2
Background	2
What the Rangeland Management Program Is	6
What the Rangeland Management Program Does	8
Range Condition and Forage Production	8
Soil and Water	9
Aquatic and Riparian Habitat	9
Wildlife	9
Socio-Economic Conditions	9
How the Rangeland Management Decision Was Developed	10
Alternatives Analyzed in the EIS	10
Environmental Preferability of the Alternatives	11
Relationship of the Rangeland Management Program to the Brothers EIS Proposed Action	12
Public Involvement	12
How the Rangeland Management Decision Will Be Implemented	14
Administrative Actions	14
Grazing Decisions	15
Range Improvements and Appropriations	15
Resource Monitoring and Evaluation	15
Opportunities for Protest and Appeal	16
Periodic Progress Reports	16



Introduction

Purpose

This document summarizes the Bureau of Land Management's program relating to range management in the Prineville District. The Rangeland Program Summary (RPS) is based on the Brothers Grazing Environmental Impact Statement (EIS). The RPS constitutes the proposed record of decision on grazing management in the EIS area. The proposed program consists of five parts:

1. The allocation of forage for livestock and wildlife,
2. The grazing systems to be implemented,
3. The categorization of all allotments,
4. The range improvements to be constructed,
5. The monitoring and evaluation program to be conducted.

The RPS also describes how the initial and subsequent grazing adjustments needed to implement the program will be made.

The grazing management decision to be implemented is, with certain modifications, the proposed action described in the Brothers Draft EIS. These modifications are described in this RPS. Refer to the EIS for detailed descriptions of livestock grazing management and range conditions.

Land Use Planning Objectives

The following objectives for grazing management of public lands within the Brothers EIS area resulted from land use planning completed in February 1982:

1. Improve range condition through the development and implementation of economically feasible grazing systems and range improvements. Allocate available forage between competing uses.
2. Protect sensitive or fragile soils from excessive disturbance. Use prescribed fire (both natural and control burning) as a preferred vegetation manipulation method.
3. Maintain or improve riparian vegetation condition by restricting or excluding livestock use (period and/or numbers) in all riparian zones adjacent to perennial water.

Decisions relating to the above grazing management objectives were deferred in the land use plan until a grazing management environmental impact statement was completed. The Brothers Grazing Management Environmental Impact Statement has since been finalized. The findings of that EIS coupled with public comment received and subsequent economic analyses have been the basis for the decisions contained in this document.

Background

The Prineville District administers the grazing on nearly 1.1 million acres of public land within the Brothers EIS area. There are an additional 6,000 acres of public land administered by other federal agencies, approximately 55,000 acres of state land, 15,000 acres of county land and about 1.2 million acres of private land within the EIS area. The district public rangelands are divided into 178 allotments (Map 1).

During 1981 there were 119 operators with 74,769 AUMs of active preference, however, only 65,269 AUMs were actually sold. Range improvement projects completed prior to 1981 include 40,821 acres of seedings, 406 miles of fencing, 71 cattleguards, 84 miles of pipeline, 225 reservoirs or water catchments, 47 spring developments, and 14 wells.

The present range condition and trend data are shown on Table 1.

Wildlife habitats of special concern consist of approximately 143,000 acres of crucial deer winter range; about 64,000 acres of crucial antelope range; and nearly 39,000 acres of elk winter range; 407 acres of stream riparian habitat; 336 acres of reservoir riparian habitat; and 96 stream miles of fish habitat. There are 46 miles of stream and 5 reservoirs presently fenced to exclude livestock.

The bald eagle is classified as threatened by the Secretary of the Interior on the Federal Endangered Species list (44 FR 12:3544, 1979) and is a winter migrant to the area. Peregrine falcons are classified as federally endangered, also found in the previously mentioned list, and were sighted twice in 1978 during the nesting season although no nest sites were located.

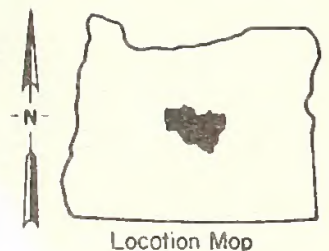
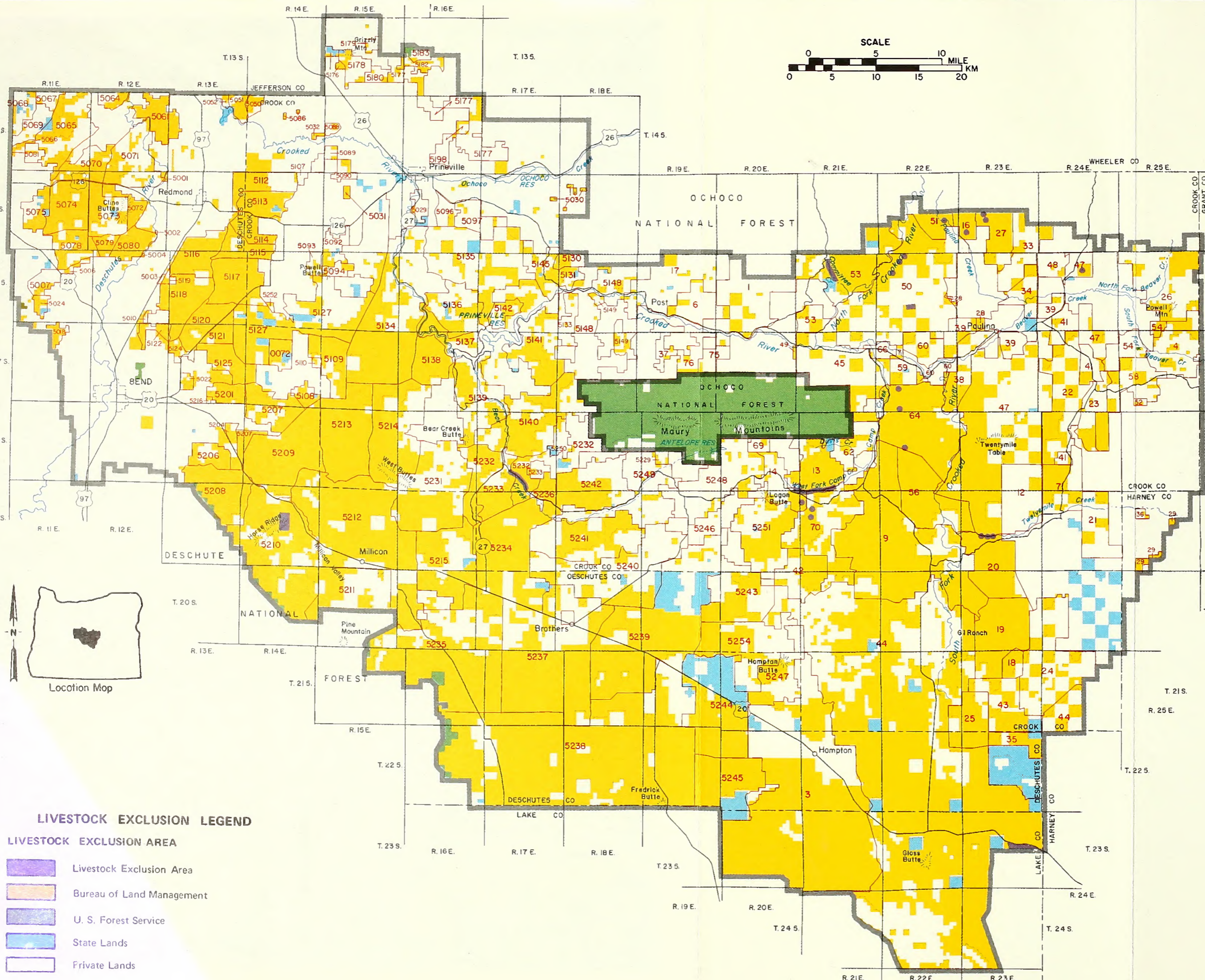
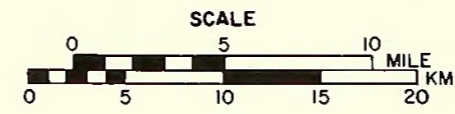
**BROTHERS GRAZING MANAGEMENT
ENVIRONMENTAL IMPACT STATEMENT**

1983

ALLOTMENT LEGEND
Allotment Boundary

Allotment Numbers and Names

Deschutes Resource Area	
0072 Miltenberger	5125 Mayfield Pond
5001 Witaker	5127 Powell Butte
5002 Broedus & Carder	5130 Pilot Butte
5003 Senowski	5131 McClellan
5004 Lamb	5133 Long Hollow
5006 Emmrich	5134 Stearns
5007 Harsch	5135 Dry Creek
5010 Herrington	5136 Devis
5018 Wierteske	5137 Prineville Dam
5022 Airport	5138 Plateau
5024 Couch	5139 Dunham
5029 Claypool	5140 Salt Creek-Alkali
5030 Keystone	5141 Sanford Creek
5031 Meyfield-Harris	5142 Carey
5032 Berrett	5145 Eagle Rock-Bailey
5050 Gray Butte	5149 Beolitto
5051 Sherwood Canyon	5176 McCabe
5052 Smith Rocks	5177 Reynolds
5061 McWeizz	5178 Grizzly Mountain
5064 Williams	5179 Lytle Creek
5065 Lower Bridge	5180 Golden Horseshoe
5066 Pine Ridge	5182 Floyd Jones
5067 Fisher	5183 Reil Hollow
5068 Stevens-Fremont	5198 Lajer-Gove
5069 Squaw Creek	5201 Alfalfa Market Road
5070 LeFollette Butte	5204 Sinclair
5071 Odin Falls	5206 Arnold Canel
5072 Struss	5207 Michaels
5073 Cline Butte	5208 Berlow Cave
5074 Fryrear Butte	5209 Lava Beds
5075 Desert Springs	5210 Horse Ridge
5078 Home Ranch	5211 Pine Mountain
5079 Whiskey Still	5212 Millican
5080 Maston	5213 Rambo
5081 Paulus	5214 Williamson Creek
5086 Lone Pine Canyon	5215 Coats
5088 Burns-Montgomery	5216 Grieve
5089 Knoche	5229 Klootchman
5090 Zemicka	5231 West Butte
5092 Red Cloud	5232 Nye
5093 Cronin	5233 Scott
5094 Brown	5234 Heughton
5096 Foster	5235 Moffitt
5097 Russell	5236 Bear Creek
5107 Cain Fields	5237 Brothers
5108 Zell Pond	5238 ZX
5109 Hohnstein-Tetti	5239 Grassy Butte
5110 Bruckert	5240 Fehrenbacher
5111 Cook	5241 Rickmen-McCormack
5112 Driveway	5242 Spring Creek
5113 Hacker-Hassing	5243 Bright
5114 Weigand	5244 Imperial
5115 Allen	5245 Rem Lake
5116 Redmond Airport	5246 Hatfield
5117 Pipeline	5247 Lizard Creek
5118 Crenshaw	5248 Pothook
5119 Black Rock	5249 McCormack Home Ranch
5120 Hutton	5250 Coffelt Ranch
5121 Oertle	5251 96 Ranch
5122 Howard	5252 Meisner
5124 Smead	5254 Barbwire
Central Oregon Resource Area	
1 Alaska Pacific	37 Foster
3 Hampton	38 Cave
4 Miners Flet	39 Paulina
6 Post	41 Layton
7 River	42 Owens Water Community
9 Cold Springs	43 Barney Buck Creek
12 Windmill	44 G.I.
13 Sheep Mtn. Community	45 East Maury
14 Sheep Mtn. Individual	47 Lister
16 Indian Creek	48 Durgin
17 Bonnieview	49 McCullough
18 Juniper Springs	50 Rabbit Valley
19 IbeX Butte	51 Paulina Creek
20 Lower 12 Mile Table	52 Miller
21 Middle Fork 12 Mile Creek	53 North Fork
22 Laughlin	54 Beaver Creek
23 Angell	56 Dagis Lake
24 Upper Buck Creek	58 Coyote Springs
25 Upper Pocket Community	59 Dry Lake
26 Humphrey	60 Flat Top Butte
27 Upper Pocket Community	62 Bennett Field
28 Farion	64 Camp Creek Community
29 Jimmy McCuen	66 Butler
33 Congleton	69 Indian
34 Lower Pocket Community	70 Clover Creek
35 Bulger Creek	71 Coffee Butte
36 Delore	75 Weigand
	76 West Pine Creek



LIVESTOCK EXCLUSION LEGEND

	Livestock Exclusion Area
	Bureau of Land Management
	U. S. Forest Service
	State Lands
	Private Lands

**MAP 1
ALLOTMENT BOUNDARIES and
LIVESTOCK EXCLUSION AREAS**

Table 1

EIS Alternatives, Comparison of Long Term Effects

Resource	Existing Situation	Proposed Action	Alt. 1 (Optimize Livestock)	Alt. 2 (No Action)	Alt. 3 (Optimize Wildlife and Watershed)	Alt. 4 (Eliminate Livestock)
Vegetation						
Upland Vegetation						
Ecological Condition (acres)						
Climax (excellent)	24,010	41,007	83,639	12,922	14,023	15,037
Late-seral (good)	234,657	603,976	574,635	421,442	467,504	554,439
Mid-seral (fair)	565,928	260,615	221,667	378,369	467,669	345,258
Early-seral (poor)	185,499	45,641	5,603	197,361	60,898	95,360
Other	57,483	116,338	182,033	57,483	57,483	57,483
Riparian Vegetation, Streams						
Ecological Condition (acres)						
Climax (excellent)	20	148	91	93	321	321
Late-seral (good)	97	134	56	56	86	86
Mid-seral (fair)	204	118	175	145	0	0
Early-seral (poor)	86	7	85	113	0	0
Riparian Vegetation, Reservoirs						
Ecological Condition (acres)						
Climax (excellent)	11	11	11	11	40	40
Late-seral (good)	12	12	12	12	296	296
Mid-seral (fair)	28	29	29	29	0	0
Early-seral (poor)	285	284	284	284	0	0
Endangered or Threatened Species						
Sensitive Species	--	NC ¹	NC ¹	NC ¹	NC ¹	NC ¹
Available Forage Production AUMs						
Livestock allocation	74,769 ³	132,795	201,777	74,769 ³	56,831	0
Wildlife allocation	5,331	7,427	7,427	7,427	7,427	7,427
Nonallocated	884	37,135	4,811	51,115	75,021	135,779
TOTAL AVAILABLE FORAGE PRODUCTION	89,104	177,357	214,015	133,311	139,279	143,206
Wildlife Habitat Conditions						
Upland Habitat Diversity						
Changes in Habitat Diversity (percent)						
	--	+8	-1	-1	+17	+12
Fish (miles)						
Excellent	0	27	11	10	69	69
Good	18	38	20	20	25	25
Fair	40	29	45	39	2	2
Poor	38	2	20	27	0	0
Wildlife habitat						
Deer	--	+M ¹	+L	+L	+M	+L
Antelope	--	+M	+L	+L	+L	+L
Elk	--	+M	+L	+L	+M	+M
Upland Birds	--	+M	-M	NC	+H	+M
Waterfowl	--	+L	-H	NC	+H	+M
Endangered or Threatened Animals						
	--	NC	NC	NC	NC	NC
Soils						
Erosion Rate	--	+M	+M	NC	+M	+L
Water						
Quality	--	+L	NC	NC	+H	+H
Quantity (runoff)	--	+L	+L	NC	+H	+M
Channel stability	--	+L	NC	NC	+H	+H

Resource	Existing Situation	Proposed Action	Alt. 1 (Optimize Livestock)	Alt. 2 (No Action)	Alt. 3 (Optimize Wildlife and Watershed)	Alt. 4 (Eliminate Livestock)
Cultural and Paleontological	--	-L	-M	-L	-L	+L
Recreation						
Recreation activities						
Visitor use (visitor days)	235,000	+2,900	-7,500	0	+9,400	+5,600
Recreation opportunities	--	+L	-L	NC	+M	NC
Visual						
Visual contrast	--	-L	-M	NC	-L	NC
Wilderness						
Wilderness Characteristics	--	-L	-H	NC	+L	+M
Socioeconomic Values²						
Operators losing more than 10% of annual forage needs	--	1	--	--	10	63
Average change in forage as percent of annual need	--	+11	+23	0	-2	-11
Livestock forage (\$000)	\$11,300	+\$1,508	+\$3,074	0	-\$207	-\$1,307
Recreation (\$000)	\$ 2,291	+\$ 24	-\$ 50	0	+\$ 72	+\$ 12
Employment (jobs)	1,890	+219	+434	0	-21	-186

'NC = No Change
 + = Beneficial
 - = Adverse
 L = Low
 M = Medium
 H = High

² Socioeconomic effects are shown as changes from the existing situation (actual grazing use).

³ Present Active Preference

What the Rangeland Management Program Is

The program to be implemented consists of the following major actions:

1. The initial allocation of existing available forage:	
Livestock	82,804 AUMs
Wildlife	5,331 AUMs
Nonallocated	969 AUMs
Existing available forage production	89,104 AUMs

2. Use of grazing systems on all 178 allotments. (One allotment was divided into two, thus increasing the total of 177 allotments described in the Brothers Draft EIS to 178.)

3. Categorization of allotments into the Improve category (44 allotments and 580,000 acres), the Maintain category (66 allotments and 407,000 acres), and the Custodial category (68 allotments and 70,000 acres) has been designed to concentrate public funds and management efforts on allotments which have the most significant problems and potential for improvement. Refer to the Administrative Actions section for the category criteria.

4. Construction of new range improvements at a cost of \$3,141,200 to achieve an increase of 49,991 livestock AUMs for a potential long term sustained



livestock forage production of 132,795 AUMs and an overall improvement in range condition.

5. Monitoring and evaluation of changes in resource condition and uses caused by implementation of this decision.

The grazing management program includes a forage allocation to livestock and wildlife to meet resource objectives. Forage allocations for each allotment are shown in Appendix I. Overall, the initial livestock forage allocation is a 10 percent increase over the current active preference. This initial livestock allocation is an increase over the current active preference on 58 allotments, no change on 105 allotments, and a decrease on 15 allotments. Reductions will be made in accordance with regulations as provided in 43 CFR 4110.3-2(c). The initial livestock forage allocations will be subject to some change as a result of new data gathered during the ongoing consultation, allotment agreement and allotment management plan (AMP) process.

Management actions that are included in the program to maintain or improve aquatic and riparian habitat and improve water quality on 96 miles of streams and 5 reservoir riparian areas are:

- Maintain livestock exclusions along 46 miles of stream and 5 reservoirs;
- Exclude livestock from an additional 49 acres of stream riparian habitat;
- Provide additional stream stabilization through artificial stream structures and streambank stabilization.

In order to improve wildlife habitat and to provide an adequate supply of forage for wildlife needs, big game is initially allocated 5,331 AUMs of competitive forage. This is unchanged from the present allocation, however, it will increase to 7,427 AUMs of competitive forage over the long term.

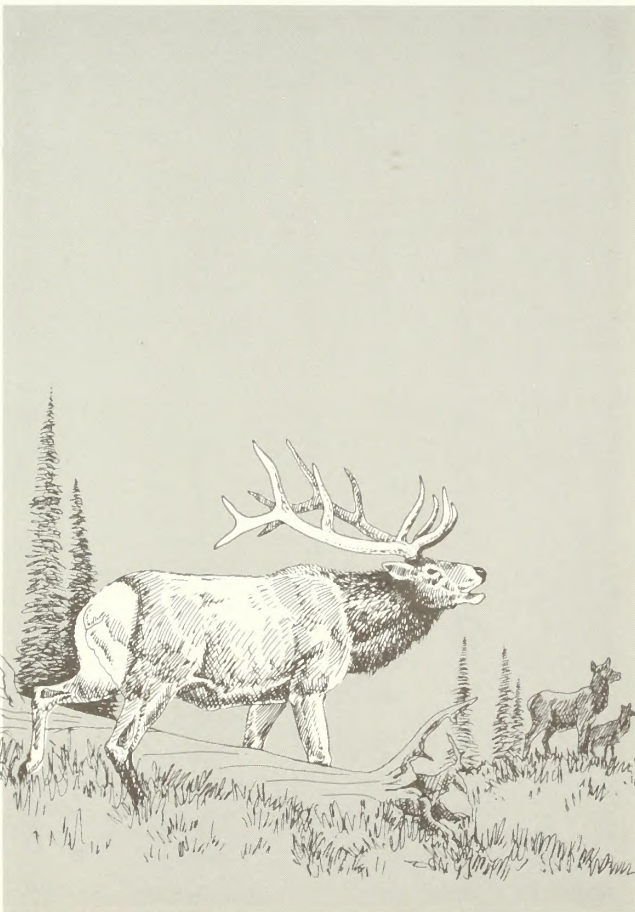
Long term forage allocations would meet the forage demand for the existing management objective numbers of the Oregon Department of Fish and Wildlife (ODFW) for deer, elk, and antelope.

What the Rangeland Management Program Does

This program enables BLM to meet the multiple use mandates and agency mission spelled out in the Federal Land Policy and Management Act (FLPMA, 1976), the Public Rangeland Improvement Act (PRIA, 1978), and the National Environmental Policy Act (NEPA, 1969). The following discussion summarizes the effects of the proposed rangeland management program.

Range Condition and Forage Production

The planned level of grazing use combined with grazing systems and range improvements will improve range ecological condition on 46 percent of the EIS area and maintain current condition on 50 percent. Approximately 3 percent of the area will be seeded and less than 1 percent will decline in ecological condition due to juniper invasion in areas that will not be treated. Over the long term, following full program implementation, livestock forage production is expected to increase to 132,795 AUMs. Of the projected 49,991 AUMs of livestock forage increase, approximately 19,463 AUMs will be produced through land treatments, such as brush control and seeding and 30,528 AUMs from improved grazing management systems.



Soil and Water

Overall soil and watershed conditions will be improved by the rangeland management program. Streambank stability will improve and less bank erosion will occur along 96 miles of perennial streams.

Aquatic and Riparian Habitat

Livestock exclusion or restricted use along 46 miles of stream, 55 miles of stream stabilization, 620 stream structures, and 15 acres of debris removal will maintain or improve water quality and fish habitat. New water development and fencing is expected to improve livestock distribution, providing better forage utilization and reducing the impact of concentration areas. Riparian vegetation is expected to improve on 75 percent of the stream riparian habitats. This is an increase of 20 percent over the EIS proposed action. The remaining acres will be maintained in current good to excellent condition class. Reservoir riparian habitats will improve through fencing on 7 percent of the area and be maintained or slightly improved through grazing management on the remaining 93 percent. Reservoir riparian was created with the establishment of livestock waters. It is not a naturally occurring situation and generally does not have high habitat potential. Where exceptional riparian potential does exist, measures have been taken to provide both livestock water and riparian improvement for wildlife species.

Wildlife

Wildlife species differ widely in their habitat requirements. This program will help provide a variety of vegetative successional stages and a corresponding variety of habitats for wildlife.

The long term forage allocation to wildlife is designed to accommodate ODFW proposed population increases of 27 percent for deer, 23 percent for antelope and 71 percent for elk.

The grazing systems planned in deer and antelope winter ranges are expected to improve or maintain habitat conditions on 97 percent of the crucial deer winter range and 95 percent of the crucial antelope winter range.

Socio-Economic Conditions

That portion of the ranching industry that uses public lands, the construction industry and recreational activities will be most affected by this proposed rangeland management program. The initial livestock forage allocation is a 10 percent net increase (8,035 AUMs) over the 1981 active preference level.

Initially, livestock use will be reduced for three operators by over 10 percent and for an additional 9 operators by less than 10 percent (15 allotments). There will be no change of livestock

use for 82 operators (105 allotments) and 33 operators (58 allotments) will receive an increase.

An immediate increase in grazing use of 8,035 AUMs is expected to increase net annual local personal income by \$100,000. In addition, because of the estimated personal income effect during the ten-year implementation of the range improvement program, total local personal income should increase by \$340,000.

The local personal income of permittees, their employees and other local business owners would be increased by \$700,000 per year due to forage increase in the long term. This increase could also lead to a net increase in ranch valuation based on an income appraisal for mortgage loan collateral or for ranch sale purposes of \$2.3 million over the long term.



How the Rangeland Management Decision was Developed

Alternatives Analyzed in the EIS

The Brothers EIS analyzed the environmental consequences of the proposed rangeland management program and four alternative programs. Refer to the EIS for detailed descriptions of the alternatives and to Table 1 for a comparison of the long term effect of the EIS alternatives. The following is a brief discussion of each alternative. It also explains why each alternative was not selected.

The Proposed Action, the Optimize Livestock and Optimize Wildlife and Watershed Values alternatives were developed following public meetings during the land use planning process and EIS scoping. The Continue Present Management (No Action) alternative is required by CEQ regulations and the Eliminate Livestock Grazing alternative was included for comparison purposes to show the effect of complete livestock removal from public lands.

Proposed Action

The proposed action would increase the present allocation of livestock forage by 8,318

AUMs. The projected long term increases, amounting to 58,026 AUMs more than present levels (active preference), would be accomplished through range improvement projects and changes in grazing systems.

While this proposal benefits most resource conditions including social and economic conditions it was not accepted in its entirety. This is due to an analysis of the benefits that would be derived from rangeland improvements compared to the cost of those projects. Several projects were not considered further because they were not cost effective. The RPS decision reflects these changes (Appendix I, II & III).

Optimize Livestock Grazing (Alternative 1)

In the long term, this alternative would provide 68,982 more AUMs of forage for livestock than the Proposed Action through the implementation of additional rangeland improvements and changes in grazing systems.

This alternative was not selected because of the range improvement costs and the adverse impacts to plant diversity, residual ground cover, wildlife habitat diversity, recreation activities, visual and cultural resources.

Continue Present Management (Alternative 2)

Under this alternative, present management actions would continue. The existing forage allocation for livestock would remain at 74,769 AUMs. Forage allocated for wildlife would increase to 7,427 AUMs in the long term. Existing range improvements would be maintained but no new projects would be developed.

This alternative was adopted in some allotments where no change was felt to be necessary. It would, however, fail to solve present resource problems in many other areas, such as allotments where grazing systems would encourage downward ecological change.

Optimize Wildlife Habitat and Watershed Values (Alternative 3)

Long term livestock forage allocations would be 75,964 AUMs fewer under this alternative than the proposed action. Livestock grazing would be eliminated from allotments within deer and antelope winter ranges as well as sage grouse nesting areas. In addition, no livestock grazing would be allowed on any riparian area or on any area with critical or severe soil erosion hazards.

Although this alternative would benefit resource conditions in some allotments, it would not make a significant change on the majority of the area.

One example where it would make a significant change and where it was adopted is in the River pasture of the Prineville Dam allotment, located

adjacent to the Crooked River downstream from Prineville Reservoir.

Overall local personal income would have decreased by an estimated \$207,000 annually from present levels under this alternative. For these reasons it was adopted only in those areas where significant improvement was expected to occur.

Eliminate Livestock Grazing (Alternative 4)

This alternative would eliminate all livestock grazing from the public lands in the EIS area with the exception of trailing use.

This alternative was not selected because it is inconsistent with BLM land use policies and would reduce local personal income by \$1,307,000 annually. A total of 186 jobs would also be lost in the local economy.

Environmental Preferability of the Alternatives

Environmental preferability is judged using the criteria in the National Environmental Policy Act of 1969 (NEPA). Title I, Section 101(b) of NEPA establishes the following goals:

- (1) fulfill the responsibilities of each generation as trustee of the environment for succeeding generations;
- (2) assure for all Americans a safe, healthful, productive, and esthetically and culturally pleasing surroundings;
- (3) attain the widest range of beneficial uses of the environment without degradation, risk to health or safety, or other undesirable and unintended consequences;
- (4) preserve important historic, cultural, and natural aspects of our national heritage, and maintain, wherever possible, an environment which supports a diversity and variety of individual choice;
- (5) achieve a balance between population and resource use which will permit high standards of living and a wide sharing of life's amenities; and
- (6) enhance the quality of renewable resources and approach the maximum attainable recycling of depletable resources.

The proposed action in the EIS ranked first in environmental preferability. It was felt to be in compliance with all NEPA goals, especially goals 1, 3, 5 and 6. The proposed action was followed by the Optimize Wildlife and Watershed Alternative (Alt. 3). The reason for this was because while NEPA emphasizes biological and physical components, it also deals with social and economic values. While alternative 3 was felt to be in greater compliance with goal 2 than the proposed action, it was felt that it did not comply as well with goals 5 and 6 as did the proposed action.

The Optimize Livestock Alternative (Alt. 1) was in greatest compliance with goal 6 and to a lesser degree goals 1 and 5 because of its emphasis on maximum productivity and enhancement of overall ecological condition. The continue present management or No Action Alternative (Alt. 2) was felt to be in compliance with goals 2 and 4 because it maintains current conditions. This alternative was not in compliance with goals 1, 3, 5 and 6 since it makes no attempt to enhance environmental quality or diversity and does not improve social or economic well being. The Eliminate Livestock Grazing Alternative (Alt. 4) was in compliance with goals 3 and 4 since it removes all impacts of livestock grazing. It is not in compliance with goals 2, 5 and 6 because of adverse effects on economic condition.

Relationship of the Rangeland Management Program to the Brothers EIS Proposed Action

The grazing systems, forage allocation and range improvements listed below are similar to the proposed action described in detail in the Draft Brothers Grazing Management EIS.

Changes to the proposed action are identified in Tables 2 and 3.

Forage Allocation

The differences between the RPS forage allocation and the EIS allocations outlined in Table 2 are minor. Changes were made as a result of land exchanges, allotment boundary adjustments, and printing errors.

Grazing Systems

The differences between the EIS proposed action and the RPS initial decision are the results of the selective management policy, benefit/cost analysis and the ongoing consultation process. The revised grazing systems are shown in Appendix II. Changes in grazing systems occurred on less than 1 percent of the area.

Range Improvements

There is a significant difference between the proposed range improvement program shown in Table 3 and those included as part of the EIS proposed action. Changes are the result of project elimination or modification based upon benefit/cost (B/C) analysis and implementation of the selective management policy. Range improvements shown on Table 3 are only those projects in Improve (I) category allotments. The Range Improvements and Appropriations section discusses this classification and Appendix II and III show which allotments are in the Improve (I) category and which projects are proposed for implementation.

**Table 2
Comparison of Initial Forage Allocations**

	EIS Allocation	RPS Allocation
Livestock	83,087	82,804
Wildlife	5,331	5,331
Nonallocated	686	969

Table 3 Comparison of Proposed Range Improvements

Type of Range Improvements	EIS Proposed Action	RPS Decision
Fence (miles)	391	147
Spring (each)	13	11
Pipeline (miles)	467	306
Wells (each)	7	1
Reservoirs (each)	25	7
Waterholes	2	0
Vegetation Manipulation (acres)		
Spray/Seed	3,200	400
Burn/Seed	42,330	36,220
Plow/Seed	8,625	0
Brush Control/Spray	57,635	27,300
Brush Control/Burn	47,486	51,938
Brush Control/Chain	5,000	0
Juniper Control	97,733	69,020

Public Involvement

Many formal and informal contacts were made by BLM personnel during the planning process. Four major land use planning issues were identified relating to grazing management in the Brothers EIS area. They were: 1) the impacts of BLM land use allocation on the social and economic structure of local communities, 2) the availability of forage for livestock grazing, 3) providing a diversity of wildlife habitats on BLM managed lands, 4) protection of riparian areas and enhancement of water quality.

Public meetings to scope the Brothers Grazing Management Environmental Impact Statement were combined with meetings to discuss development of the preferred alternative for the Brothers Management Framework Plan (MFP). The MFP at that stage consisted of three land use allocation alternatives which had been developed from criteria established with earlier public input. All three alternatives called for increased long term allocation of forage for livestock. As a result of scoping, an additional alternative was developed which called for an overall decrease in livestock forage allocations.

Alternatives presented in the MFP were discussed in public meetings in Portland, Prineville and Bend

with 58 people attending, and with the Prineville BLM District Advisory Council in September 1981. Fifty-six oral and written comments were received and used in developing the proposed action and other alternatives analyzed in the Brothers EIS.

On April 29, 1982, 310 copies of the draft EIS were mailed to the public and government agencies.

On May 25 and 26, 1982, public meetings were held in Prineville and Bend to discuss the draft EIS. Eighteen people were in attendance. A total of 27 comment letters were received during the comment period which closed on June 30, 1982. The primary concerns expressed were related to the cost versus benefits of rangeland improvement projects in the proposed action and the management of wildlife habitat and riparian areas. After the completion of the Brothers EIS a benefit/cost analysis was done. As a result of this analysis several range improvement projects were modified or not considered feasible due to low economic efficiency. Livestock grazing has already been excluded from some riparian areas and is planned for other riparian areas where this is the most effective way of achieving riparian habitat improvement. In the Prineville Dam Allotment all livestock grazing has been eliminated from the pasture which includes the Crooked River downstream from Prineville Reservoir.

The 27 comment letters received on the draft EIS and responses to those comments or questions were included in the final EIS which was released on September 14, 1982.



How the Rangeland Management Decision will be Implemented

Administrative Actions

Release of this Brothers Rangeland Program Summary and Record of Decision serves as public notice of the proposed range management program and will be the start of a 30-day comment period.

After release of the RPS, allotment management plans may be developed. Consultation and coordination with the operators and other interested parties will be a part of allotment management plans and allotment agreements.

Appendix I, II & III outlines the major actions to be taken on each allotment and is in essence the Record of Decision required by the Council on Environmental Quality (CEQ) regulations.

The order of range improvement completion and annual expenditures by BLM for range supervision, monitoring and project maintenance has been based upon the allotment categorization under the selective management policy (Appendix II). Under this policy each allotment was placed in one of three management categories. The policy is



designed to concentrate public funds and management efforts on allotments which have the most significant problems and potential for improvement.

The three categories and their respective criteria are as follows: Improve (I) category are those allotments where present range condition is unsatisfactory, resource potential is high, there is a positive return on investment, and/or serious resource conflicts or controversy exist.

The Maintain (M) category are those allotments where present overall range condition is satisfactory, resource potential is moderate to high, there are no serious resource conflicts or controversy, and some opportunity may exist for positive economic return from public investment. The Custodial (C) category are those allotments where present range condition is not a factor, allotments have a low resource potential, there are limited conflicts or controversy, a positive economic return from public investment does not exist or is constrained, and present management appears satisfactory.

Grazing Decisions

Forage allocation, categorization and grazing systems proposed for each allotment are shown in Appendix I and II.

Where the proposals are the same as what is presently occurring this RPS serves as the Record of Decision.

In those cases where changes from the present situation are proposed, the changes will be implemented by agreement with the concerned parties if possible. Where consultation does not result in agreement, individual decisions will be issued to implement the proposal.

In those cases where individual decisions are required they will be issued prior to the 1984 grazing season.

Increases in livestock forage allocations will be granted on a temporary basis until subsequent monitoring indicates that permanent increases in the grazing preference can be allowed.

Range Improvements and Appropriations

Achieving the resource objectives of the Brothers Land Use Plan is dependent upon receiving sufficient funding to complete range improvements, and adequate staffing to implement grazing systems, supervise grazing use and monitor resource changes. A list of the projects, an allotment ranking by priority and the approximate cost for implementation is shown in Appendix III. Ranking of allotment priority is based on resource condition and proposed projects at

the present time. Allotment analysis will be an ongoing and continuing process which reflects current conditions. Ranking is subject to change based on changes in resource conditions, project redesign, or contributions by individual operators.

Consistent with Bureau policy, first priority for rangeland improvements will be given to Improve (I) category allotments (shaded entries on Appendix I, II and III). Exceptions may be made to prevent loss of a critical resource value or to assure continuing operation of an existing management plan. Range improvements in the Maintain (M) category and Custodial (C) category allotments will generally only be implemented if the necessary funds are provided by the individual operator. All project work is subject to benefit/cost analysis.

Until Congress has determined whether the wilderness study areas will or will not be designated wilderness, projects in those areas will be governed by wilderness interim management guidelines.

Installation of the proposed rangeland facilities will begin in fiscal year 1984 and continue as funds are available. BLM's range management and range improvement programs are funded through congressional appropriations and return to the district of one-half of the grazing fees collected.

Resource Monitoring and Evaluation

A number of different resource studies will be conducted to evaluate the effectiveness of the range management program and will be included in the district monitoring plan to be completed by March, 1984. Both the type and intensity of monitoring will vary considerably between the three allotment management categories outlined in the selective management policy. Monitoring in the Improve (I) category will be most intensive and will be designed to measure progress toward objectives and the environmental factors which affect that progress.

In the Maintain (M) category allotments, monitoring intensity will be reduced and the primary emphasis will be on monitoring changes from current resource conditions.

Monitoring in the Custodial (C) category allotments will be limited to periodic inventories and observations of resource uses to measure long-term resource condition changes.

The following are the major rangeland elements to be monitored.

Plants

Trend and Utilization - Studies will be conducted primarily on those allotments in the Improve (I)

category and in riparian areas in order to determine changes in plant species composition in relation to vegetation objectives. Forage utilization studies will be conducted to determine pattern of grazing and how much vegetation is removed by grazing animals. Browse utilization studies will continue in the deer winter range.

Sensitive, Threatened or Endangered Species -

There are eight species in the Brothers EIS area being considered for listing as either endangered or threatened by the U.S. Fish and Wildlife Service, or the Oregon Natural Heritage Program. Trend studies will be done to determine the effects of the management program when it is felt that studies are needed.

Animals

Livestock - Where needed, livestock use data will be obtained from the permittee annually. These records will reflect the number and kind of animals grazing in each pasture and the amount of time livestock graze there. Livestock counts and/or marking will be made periodically by the Bureau to verify these records.

Wildlife - Use data will be obtained on antelope and deer from Oregon Department of Fish and Wildlife and supplemental BLM studies. Important habitats will be monitored to identify wildlife needs, and habitat trends and use. Use patterns, periodic observation and consultation with other agencies will be the principal monitoring methods. Nesting success studies will be continued for raptors.

Aquatic Animals - Studies will be conducted in representative riparian areas to determine changes in habitat conditions and populations of fish and wildlife. Such monitoring would comply with BLM Manual procedures. Studies will include collection of data on aquatic insects, water temperature, riparian aquifer recharge, and fish composition.

Water Quality

Water quality monitoring will be initiated in accordance with BLM policies and Sections 208 and 313 of the Federal Clean Water Act.

Weather

Weather data will be gathered annually and evaluated to determine the effects of crop year precipitation on herbage yields and for correlation with utilization studies.

Opportunities for Protest and Appeal

This RPS outlines the decisions developed for the Brothers EIS area. The program and related decisions are the result of land use planning completed in 1982 and the analysis of several alternative programs contained in the Brothers Draft EIS published in April 1982.

The release of this RPS to interested groups and individuals serves as public notice of the final decisions relating to range management on the BLM administered allotments in the Brothers EIS area where consultation has been completed (Appendix I).

Agreement with the affected operators has been reached on many of these allotments. Where agreement was not reached, individual decisions implementing the program will begin to be issued 30 days after release of the RPS.

Anyone who has indicated in writing that their interest may be affected by the decision will be issued a Notice of Proposed Decision. This notice may be protested or appealed under provisions of the Federal Grazing Regulations (43 CFR 4160.2 and 4160.4). Except where appeals are filed, these decisions will become final 30 days after issuance of the proposed decision.

Copies of agreements that have been completed will be available for public inspection during regular work hours at the Prineville District BLM Office.

Periodic Progress Reports

As this rangeland management program is implemented, a record of progress will be maintained and the specific program details will be outlined in periodic updates of the RPS. These publications will contain a summary of livestock grazing agreements and decisions, monitoring results, range improvement progress, improvement efforts made by permittees and management system information. This record of progress will be reflected in future RPS updates which will be distributed for public information and comment.

Appendices



APPENDIX I

RPS Livestock Forage Allocation

Allotment No. and Name	Acres Public Land	Big Game AUMs	Livestock Present Act.Pref.	EIS Prop. Livestock Alloc.	RPS Initial Alloc.	Comments	
0001	ALASKA PACIFIC	2,172	30	123	98	98	2,4
0003	HAMPTON	57,438	152	6,629	6,629	6,629	11
0004	MINERS FLAT	2,908	52	201	291	291	2,4,11
0006	POST	1,720	22	98	98	118	2,4,8
0007	RIVER	240	4	0	0	0	11
0009	COLD SPRINGS	37,134	64	2,142	2,554	2,554	2,4
0012	WINDMILL	920	4	70	70	70	11
0013	SHEEP MTN. COMM.	6,072	37	282	474	460	2,4,9
0014	SHEEP MTN.INDIVIDUAL	1,820	18	245	270	253	2,3,9
0016	INDIAN CREEK	1,831	41	81	93	93	2,4,11
0017	BONNIEVIEW	812	20	109	96	60	2,4,8
0018	JUNIPER SPRINGS	1,625	44	165	187	187	2,4
0019	IBEX BUTTE	12,230	112	910	910	910	11
0020	LOWER 12 MILE TABLE	9,722	91	684	684	684	11
0021	MID FK TWELVEMILE CK	1,795	14	193	193	193	
0022	LAUGHLIN	7,672	18	483	600	600	2,3,11,4
0023	ANGELL	1,517	11	141	125	125	2,4
0024	UPPER BUCK CREEK	6,991	112	624	644	644	2
0025	BUCK CREEK FLAT	5,850	47	271	325	325	2,3,4
0026	HUMPHREY	4,936	103	635	562	562	2,4
0027	UPPER POCKET COMM.	4,853	93	274	330	330	4,11
0028	FERIAN	446	11	30	30	30	11
0029	JIMMY MCCUEN	865	19	0	83	83	
0033	CONGLETON	2,128	79	197	203	203	2
0034	LOWER POCKET COMM.	1,968	31	160	160	160	2
0035	BULGER CREEK	2,560	9	775	855	855	2,4
0036	DELORE	80	10	12	10	10	2
0037	FOSTER,V.	160	4	15	15	15	2,11
0038	CAVE	3,035	23	165	194	194	1,2,4
0039	PAULINA	1,642	28	87	103	103	2,4
0041	LAYTON	1,418	24	123	111	111	2
0042	OWENS WATER COMM.	4,389	15	241	293	293	2,3,4
0043	BARNEY BUCK CREEK	5,150	66	242	409	409	2,3,4
0044	G. I.	131,678	285	10,744	10,068	10,068	2,3,4
0045	EAST MAURY	5,133	58	295	326	326	2,3
0047	LISTER	27,174	92	2,155	2,614	2,614	4
0048	DURGIN	324	10	39	39	39	11
0049	MCCULLOUGH	163	2	10	5	5	2
0050	RABBIT VALLEY	15,160	331	548	493	493	2
0051	PAULINA CREEK	2,622	65	125	148	148	2,3
0052	MILLER	120	2	22	13	13	2
0053	NORTH FORK	10,999	244	740	752	752	2
0054	BEAVER CREEK	880	19	82	82	82	2,11
0056	DAGIS LAKE	11,401	26	487	868	868	2,3,4
0058	COYOTE SPRINGS	4,418	89	404	404	404	2,11
0059	DRY LAKE	610	4	33	33	33	11
0060	FLAT TOP BUTTE	1,706	31	80	80	80	11
0062	BENNETT FIELD	1,314	38	68	68	68	11
0064	CAMP CREEK COMM.	17,861	88	966	1,122	1,122	2,3,4
0066	BUTLER	80	1	13	5	5	2
0069	INDIAN	160	1	11	7	11	2,10
0070	CLOVER CREEK	8,797	25	617	468	468	2,3,4,6,9
0071	COFFEE BUTTE	4,266	27	468	609	609	2,4
0072	MILTENBERGER	1,690	0	82	52	82	5
0075	WEIGAND	160	2	15	15	15	11
0076	WEST PINE CREEK	481	3	45	45	45	11
5001	WHITAKER	120	1	7	7	7	11
5002	SANOWSKI	40	1	10	10	10	11
5003	BROADDUS-CARTER	15	5	2	2	2	11
5004	LAMB	63	5	6	6	6	11
5006	EMMRICH	107	5	0	20	20	
5007	HARSCH	506	6	19	19	19	11
5010	HARRINGTON	80	0	2	2	2	11

Allotment No. and Name	Acres Public Land	Big Game AUMs	Livestock Present Act.Pref.	EIS Prop. Livestock Alloc.	RPS Initial Alloc.	Comments	
5018	WIERLESKE	892	5	49	49	49	11
5022	AIRPORT	597	4	49	49	49	11
5024	COUCH	768	7	0	30	30	
5029	CLAYPOOL	80	1	4	4	4	11
5030	KEYSTONE	296	4	30	30	30	11
5031	MAYFIELD-HARRIS	1,509	5	124	124	124	11
5032	BARRETT	238	4	24	24	24	11
5050	GREY BUTTE	809	3	28	28	28	11
5051	SHERWOOD CANYON	1,117	5	51	65	51	6,11
5052	SMITH ROCKS	174	3	9	17	9	6,11
5061	MCWEIZZ	6,065	0	0	348	348	
5064	WILLIAMS	763	26	44	44	44	11
5065	LOWER BRIDGE	5,521	107	310	310	310	11
5066	PINE RIDGE	358	5	34	34	34	11
5067	FISHER	389	4	0	14	14	
5068	STEVENS-FREMONT	285	5	0	46	46	
5069	SQUAW CREEK	192	4	0	17	17	
5070	LAFOLLETTE BUTTE	3,875	54	0	258	258	5
5071	ODIN FALLS	3,869	40	0	252	252	
5072	STRUSS	2,294	10	143	143	143	11
5073	CLINE BUTTE	4,422	15	202	202	202	11
5074	FRYREAR BUTTE	6,994	20	498	498	498	11
5075	DESERT SPRINGS	1,947	10	112	150	112	6,11
5078	HOME RANCH	3,831	0	193	246	193	6,11
5079	WHISKEY STILL	1,034	4	111	111	111	11
5080	MASTON	3,382	13	209	209	209	11
5081	PAULUS	152	4	14	14	14	11
5082	BULL FLAT	116	1	0	7	7	
5086	LONE PINE CANYON	120	1	5	5	5	11
5088	BURNS-MONTGOMERY	160	3	17	8	17	6,11
5089	KNOCHE	185	1	6	6	6	11
5090	ZEMLIKA	344	2	18	18	18	11
5092	RED CLOUD	717	4	33	62	33	6,11
5093	CRONIN	321	4	19	19	19	11
5094	BROWN	493	8	40	40	40	11
5096	FOSTER	200	2	24	24	24	11
5097	RUSSELL	277	7	16	16	16	11
5107	CAIN FIELDS	114	3	36	36	36	11
5108	ZELL POND	1,228	4	75	75	75	11
5109	HOHNSTEIN-TATTI	5,096	17	262	262	262	11
5110	BRUCKERT	126	4	35	35	35	11
5111	COOK	1,860	8	0	49	49	
5112	DRIVEWAY	3,058	10	100	138	138	1
5113	HACKER-HASSING	4,019	13	99	99	99	11
5114	WEIGAND,N.	2,651	9	177	177	177	11
5115	ALLEN	3,554	8	110	110	110	11
5116	REDMOND AIRPORT	5,467	17	228	228	228	11
5117	PIPELINE	8,227	21	513	513	513	11
5118	CRENSHAW	7,267	21	392	405	405	
5119	BLACKROCK	254	0	0	24	24	
5120	HUTTON	4,818	13	254	254	254	11
5121	OERTLE	2,629	9	120	120	120	11
5122	HOWARD	1,394	4	68	68	68	11
5124	SMEAD	755	2	23	23	23	11
5125	MAYFIELD POND	4,549	13	305	305	305	11
5127	POWELL BUTTE	13,158	30	680	680	680	11
5130	PILOT BUTTE	1,394	26	84	84	84	11
5131	MCCLELLAN	861	15	75	75	75	11
5133	LONG HOLLOW	300	2	17	17	17	11
5134	STEARNS	18,407	106	852	852	852	11
5135	DRY CREEK	7,055	67	334	334	334	11
5136	DAVIS	3,584	34	213	234	234	11
5137	PRINEVILLE DAM	3,925	0	276	276	139	
5138	PLATEAU	5,477	15	252	252	252	11
5139	DUNHAM	6,128	37	323	338	338	11
5140	SALT CR. ALKALI BU.	10,118	32	688	800	800	4,11

Allotment No. and Name	Acres Public Land	Big Game AUMs	Livestock Present Act.Pref.	EIS Prop. Livestock Alloc.	RPS Initial Alloc.	Comments
5141	SANFORD CREEK	6,924	10	152	152	11
5142	CAREY	1,129	20	46	46	11
5145	EAGLE ROCK-BAILEY	4,766	45	262	262	11
5149	BEOLETTO	968	24	55	84	6,11
5176	MCCABE	350	0	10	22	11
5177	REYNOLDS	1,838	15	101	176	6,11
5178	GRIZZLY MTN	701	3	69	69	11
5179	LYTLE CREEK	120	1	8	8	11
5180	GOLDEN HORSESHOE	197	3	14	14	11
5182	F. JONES	1,027	25	77	166	6,11
5183	RAIL HOLLOW	115	2	10	10	11
5198	LAIER-GOVE	529	3	15	15	11
5201	ALFALFA MKT	2,436	8	141	141	11
5204	SINCLAIR	630	3	38	30	7,11
5206	ARNOLD CANAL	2,791	16	0	87	11
5207	MICHAELS	6,353	22	280	196	7,11
5208	BARLOW CAVE	9,101	84	600	600	11
5209	LAVA BEDS COMM.	16,354	80	729	508	2,
5210	HORSE RIDGE	22,152	107	1,624	1,839	5,11
5211	PINE MOUNTAIN	5,323	21	320	320	11
5212	MILLICAN	32,560	106	1,705	2,800	11
5213	RAMBO	15,997	53	672	605	11
5214	WILLIAMSON CREEK	12,905	44	1,007	1,007	11
5215	COATS	10,514	28	853	1,063	2,5
5216	GRIEVE	84	1	4	4	11
5229	KLOOTCHMAN	210	0	26	26	11
5231	WEST BUTTE	11,386	50	806	942	2
5232	NYE	8,627	34	422	422	11
5233	SCOTT	4,625	5	255	255	11
5234	HAUGHTON	18,437	30	1,061	1,552	4,11
5235	MOFFITT	30,506	107	2,334	2,830	2
5236	BEAR CREEK	1,750	4	98	200	2
5237	BROTHERS	28,465	65	2,429	3,008	4,11
5238	ZX	76,498	223	7,100	7,100	11
5239	GRASSY BUTTE	25,701	50	3,018	4,100	4,11
5240	FEHRENBACHER	6,605	7	492	800	4,5,11
5241	RICKMAN-MCCORMACK	7,991	23	398	567	4,11
5242	SPRING CREEK	6,245	28	401	401	11
5243	BRIGHT	6,269	22	643	1,000	4,11
5244	IMPERIAL	12,332	37	777	777	11
5245	RAM LAKE	10,235	41	499	519	2
5246	HATFIELD	122	0	5	5	11
5247	LIZARD CREEK	3,263	7	280	280	11
5248	POTHOOK	2,454	15	140	140	11
5249	MCCORMACK HOME RANCH	1,274	13	54	68	4,11
5250	COFFELT	440	2	20	20	11
5251	96 RANCH	6,771	19	482	482	11
5252	MEISNER	124	4	34	34	11
5254	BARBWIRE	7,029	12	694	870	2
9998	C.O. UNALLOTTED	414				
9999	DESC.UNALLOTTED	11,580				
TOTALS		1,069,703	5,331	74,769	83,087	82,804

COMMENTS

1. Allocation dependent on project implementation.
2. Consultation continuing.
3. Allocation dependent on implementation of grazing system.
4. Allocation dependent on utilization monitoring results.
5. Additional land and grazing capacity acquired in Deschutes County Exchange.
6. EIS compilation contained error.
7. Consultation resulted in changed grazing system/season of use rather than reduced allocation.
8. Public land acreage and grazing capacity changed due to land exchange.
9. Public land acreage and grazing capacity changed due to allotment boundary changes and grazing preference transfers.
10. Newly created allotment due to allotment boundary change and grazing preference transfer.
11. Allocation becomes final unless protested in writing within 30 days after release of the RPS.

-- Improve (I) Category allotment.

APPENDIX II Grazing Systems

Allotment No. and Name	Categorization ^{1/}	Allotment Objectives ^{2/}	Present	Proposed	RPS Initial	Comments ^{4/}	
			Grazing Systems ^{3/}	EIS Action Grazing Sys. ^{3/}	Grazing Sys. ^{3/} Decision ^{3/}		
0001	ALASKA PACIFIC	I	A	S/S	DR	DR	2,4
0003	HAMPTON	M	A,B,E,F,G	RR	RR,DR	RR,DR	
0004	MINERS FLAT	M	A,B,E,G	RR,FFR	RR,DR	RR,DR	2,4
0006	POST	M	A	S/S,DR	DR	DR	2,4
0007	RIVER	C	D	REST	REST	REST	
0009	COLD SPRINGS	M	A,B,C,G	RR	RR	RR	2,4
0012	WINDMILL	C	B,E,F	DR	DR	DR	
0013	SHEEP MTN. COMM.	M	A,B,C,D	DR,EX	RR,DR,EX	RR,DR,EX	2,4
0014	SHEEP MTN.INDIVIDUAL	M	A,B,C,D	DR,FFR	DR,RR	DR	2,4
0016	INDIAN CREEK	I	A,B,D	DR	DR	DR	2,4
0017	BONNIEVIEW	C	B	FFR	DR	DR	2,4
0018	JUNIPER SPRINGS	I	A,B,C,E,G	S/S	RR	RR	1,2,4
0019	IBEX BUTTE	I	A,B,C,E,G	S/S	RR	RR	1,2,4
0020	LOWER 12 MILE TABLE	I	A,B,C,E,F,G	S/S	RR	RR	1,2,4
0021	MID FK TWELVEMILE CK	M	B	D	DR	DR	
0022	LAUGHLIN	I	A,B,E,G	E	DR	DR	1,2,4
0023	ANGELL	I	A,E,G	E,FFR	DR	DR	1,2,4
0024	UPPER BUCK CREEK	M	A,B,E	DR,R	DR	DR	
0025	BUCK CREEK FLAT	I	A,B,E,F	DR	RR	RR	1,2,4
0026	HUMPHREY	M	A,B,D,E	DR,FFR	DR	DR	
0027	UPPER POCKET COMM.	M	A	DR	DR	DR	4
0028	FERIAN	C	B	FFR	DR	DR	
0029	JIMMY MCCUEN	C	B	D	DR	DR	
0033	CONGLETON	M	A	RR	RR	RR	2
0034	LOWER POCKET COMM.	M	A	RR	RR	RR	2
0035	BULGER CREEK	M	B,E,G	DR	DR	DR	2,4
0036	DELORE	C	B	S/S/F	DR	DR	2
0037	FOSTER, V.	C	B	FFR	DR	DR	2
0038	CAVE	I	A	S/S	DR	DR	1,2,4
0039	PAULINA	M	A	DR, S/S/F	DR	DR	2,4
0041	LAYTON	M	A	S/S/F,FFR	DR	DR	2
0042	OWENS WATER COMM.	I	A,B,C	S/S	DR	DR	2,4
0043	BARNEY BUCK CREEK	I	A,B,E,F	E	RR	RR	1,2,4
0044	G. I.	I	A,B,C,E,F,G	DR	R,DR,RR,EX	DR,RR,EX	2,4
0045	EAST MAURY	I	A	E, S/S/F	DR	DR	2,4
0047	LISTER	M	A	RR,DR,S/S/F,RR,DR,EX EX,FFR	RR,DR,EX	RR,DR,EX	2,4
0048	DURGIN	C	B	FFR	DR	DR	2
0049	MCCULLOUGH	C	B	FFR	DR	DR	2
0050	RABBIT VALLEY	M	A	S/S,EX	DR,EX	DR,EX	1,2
0051	PAULINA CREEK	M	A	S/S	DR	DR	1,2
0052	MILLER	C	B	E	DR	DR	2
0053	NORTH FORK	M	A	RR,DR,EX, FFR	DR,RR,EX	DR,RR,EX	2
0054	BEAVER CREEK	M	A	E,S/S/F	DR	DR	2
0056	DAGIS LAKE	M	A,B,E	RR	RR	RR	2,4
0058	COYOTE SPRINGS	M	A	E	DR	DR	2
0059	DRY LAKE	M	A,B	E	DR	DR	2
0060	FLAT TOP BUTTE	I	A,C	E	DR	DR	2
0062	BENNETT FIELD	M	B, D	S/S	DR	DR	2
0064	CAMP CREEK COMM.	I	A,C,D,E,G	R, D	RR, EX	RR, EX	1,2,4
0066	BUTLER	C	B	FFR	DR	DR	2
0069	INDIAN	C	A	FFR	DR	DR	2
0070	CLOVER CREEK	I	A,B,C	RR	RR	RR	2,4
0071	COFFEE BUTTE	M	A	S/S/F	DR	DR	1,2,4
0072	MILTENBERGER	M	B	E	SD	SD	1
0075	WEIGAND	C	B	FFR	DR	DR	2
0076	WEST PINE CREEK	C	B	FFR	DR	DR	2
5001	WHITAKER	C	B	E	SD	SD	1
5002	SANOWSKI	C	B	E	SD	SD	1
5003	BROADJUS-CARTER	C	B	E	SD	SD	1
5004	LAMB	C	B	E	SD	SD	1
5006	EMMRICH	C	B	E	SD	SD	1
5007	HARSCH	M	B	S/S	SD	SD	1
5010	HARRINGTON	C	B	S/S	SD	SD	1
5018	WIERLESKE	M	B	S/F	SD	SD	1
5022	AIRPORT	M	B	E	SD	SD	1

Allotment No. and Name	Categorization ^{1/}	Allotment Objectives ^{2/}	Present	Proposed	RPS Initial	Comments ^{4/}	
			Grazing Systems ^{3/}	EIS Action Grazing Sys. ^{3/}	Grazing Sys. ^{3/}		
5024	COUCH	C	B	E	SD	SD	1
5029	CLAYPOOL	C	B	FFR	SD	SD	1
5030	KEYSTONE	C	B	FFR	SD	SD	1
5031	MAYFIELD-HARRIS	C	B	S/F	DR	DR	1
5032	BARRETT	C	B	FFR	SD	SD	1
5050	GREY BUTTE	M	B	S/S	SD	SD	1
5051	SHERWOOD CANYON	M	B	S/S	SD	SD	1
5052	SMITH ROCKS	C	B	S/S	SD	SD	1
5061	MCWEIZZ	C	B	E	SD	SD	
5064	WILLIAMS	C	B	S/S	DR	DR	1
5065	LOWER BRIDGE	C	B	D	DR	DR	1
5066	PINE RIDGE	C	B	S/S	SD	SD	1
5067	FISHER	C	B	E	SD	SD	
5068	STEVENS-FREMONT	C	B	E	SD	SD	
5069	SQUAW CREEK	C	B	E	SD	SD	
5070	LAFOLLETTE BUTTE	C	B	E	DR	DR	1
5071	ODIN FALLS	C	B	E	SD	SD	1
5072	STRUSS	C	B	E	DR	DR	1
5073	CLINE BUTTE	I	G	R	DR	DR	
5074	FRYREAR BUTTE	I	G	R	DR	DR	
5075	DESERT SPRINGS	M	B	S/S	DR	DR	1
5078	HOME RANCH	I	G	E	DR	DR	
5079	WHISKEY STILL	M	B	E	DR	DR	1
5080	MASTON	M	B	S/S	DR	DR	1
5081	PAULUS	C	B	E	SD	SD	1
5082	BULL FLAT	C	B	E	SD	SD	
5086	LONE PINE CANYON	C	B	E	SD	SD	
5088	BURNS-MONTGOMERY	C	B	E	SD	SD	1
5089	KNOCHE	C	B	S/S	SD	SD	1
5090	ZEMLIKA	C	B	E	SD	SD	1
5092	RED CLOUD	M	B	E	SD	SD	1
5093	CRONIN	M	B	E	DR	DR	1
5094	BROWN	C	B	S/S	SD	SD	1
5096	FOSTER	C	B	S/S	SD	SD	1
5097	RUSSELL	C	B	S/S	SD	SD	1
5107	CAIN FIELDS	C	B	E	SD	SD	1
5108	ZELL POND	M	B	E	SD	SD	1
5109	HÖHNSTEIN-TATTI	M	B	S/F	DR	DR	1
5110	BRUCKERT	C	B	S/F	SD	SD	1
5111	COOK	C	B	E	SD	SD	
5112	DRIVEWAY	M	B	R	DR	DR	1
5113	HACKER-HASSING	M	B	R	DR	DR	1
5114	WEIGAND	M	B	S/S	DR	DR	1
5115	ALLEN	M	B	S/S	DR	DR	1
5116	REDMOND AIRPORT	M	B	R	DR	DR	1
5117	PIPELINE	M	B	RR	DR	DR	
5118	CRENSHAW	M	B	R	DR	DR	1
5119	BLACKROCK	C	B	E	DR	DR	
5120	HUTTON	M	B	R	DR	DR	1
5121	OERTLE	C	B	DR	DR	DR	
5122	HOWARD	C	B	R	DR	DR	1
5124	SMEAD	C	B	R	DR	DR	1
5125	MAYFIELD POND	M	B	R	DR	DR	1
5127	POWELL BUTTE	M	B	E	DR	DR	1
5130	PILOT BUTTE	M	B	S/S	SD	SD	1
5131	MCCLELLAN	M	B	E	SD	SD	1
5133	LONG HOLLOW	C	B	FFR	SD	SD	1
5134	STEARNS	I	E,G	DR	DR	DR	1
5135	DRY CREEK	M	R	DR	DR	DR	1
5136	DAVIS	M	B	E	DR	DR,EX	1
5137	PRINEVILLE DAM	I	C,D	D	DR	DR	
5138	PLATEAU	I	A,C	R	DR	DR	
5139	DUNHAM	I	A,C	R	DR	DR	
5140	SALT CR. ALKALI BU.	I	A,C,D	DR	DR	DR	
5141	SANFORD CREEK	I	A,C,D	E	DR	DR	
5142	CAREY	I	A,C	S/S	DR	DR	
5145	EAGLE ROCK-BAILEY	I	A,C,D	RR	RR	RR	
5149	BEOLETTO	M	B	S/S/F	DR	DR	1
5176	MCCABE	C	B	S/S/F	E	E	

Allotment No. and Name	Categorization ^{1/}	Allotment Objectives ^{2/}	Grazing Systems ^{3/}	Proposed EIS Action		Comments ^{4/}	
				Grazing Sys. ^{3/}	Decision ^{3/}		
5177	REYNOLDS	M	B	E	SD	SD	1
5178	GRIZZLY MTN	C	B	E	SD	SD	1
5179	LYTLE CREEK	C	B	S/S	SD	SD	1
5180	GOLDEN HORSESHOE	C	B	S/S	SD	SD	1
5182	F. JONES	M	B	E	SD	SD	1
5183	RAIL HOLLOW	C	B	E	SD	SD	1
5198	LAIER-GOVE	C	B	FFR	SD	SD	1
5201	ALFAFA MKT	M	B	S/S	DR	DR	1
5204	SINCLAIR	M	B	R	DR	SD	5
5206	ARNOLD CANAL	C	B	S/S	DR	DR	
5207	MICHAELS	M	B	R	DR	SD	5
5208	BARLOW CAVE	I	A,E	S/S	DR	DR	1
5209	LAVA BEDS COMM.	M	B	S/S	DR	DR	2
5210	HORSE RIDGE	I	A,G	D	DR	DR	
5211	PINE MOUNTAIN	M	B	DR	DR	DR	
5212	MILLICAN	I	A,G	RR	DR	DR	
5213	RAMBO	M	B	R	DR	DR	2
5214	WILLIAMSON CREEK	I	A,G	RR	DR	DR	
5215	COATS	M	B	DR	DR	DR	
5216	GRIEVE	C	B	S/S	SD	SD	1
5229	KLOOTCHMAN	C	B	FFR	SD	SD	1
5231	WEST BUTTE	I	A,C	DR	DR	DR	
5232	NYE	I	A,C	R	DR	DR	
5233	SCOTT	I	A,C	DR	DR	DR	
5234	HAUGHTON	I	A,C,G	DR	DR	DR	
5235	MOFFITT	I	A,G	RR	DR	DR	
5236	BEAR CREEK	I	A,C	S/S	SD	SD	
5237	BROTHERS	I	A,G	DR	DR	DR	
5238	ZX	I	A,G	RR	RR	RR	
5239	GRASSY BUTTE	M	B	DR	DR	DR	
5240	FEHRENBACHER	M	B	DR	DR	DR	
5241	RICKMAN-MCCORMICK	I	A,C	DR	DR	DR	
5242	SPRING CREEK	I	A,C	R	DR	DR	
5243	BRIGHT	M	B	S/S	DR	DR	1
5244	IMPERIAL	C	B	R	DR	DR	1
5245	RAM LAKE	I	A,G	DR	DR	DR	
5246	HATFIELD	C	B	DR	DR	DR	
5247	LIZARD CREEK	M	B	R	DR	DR	1
5248	POTHOOK	C	B	DR	DR	DR	
5249	MCCORMACK HOME RANCH	C	B	DR	DR	DR	
5250	COFFELT	M	B	R	DR	DR	1
5251	96 RANCH	I	A,C	DR	DR	DR	
5252	MEISNER	C	B	E	SD	SD	1
5254	BARBWIRE	C	B	DR	DR	DR	
9998	C.O. UNALLOTTED	O	B	O	O	O	
9999	DESC. UNALLOTTED	O	B	O	O	O	

^{1/} Categorization (see Administrative Actions section for definitions)
 I - Improve (shaded entries)
 M - Maintain
 C - Custodial

^{2/} Allotment Objectives
 A Improve ecological condition
 B Maintain ecological condition
 C Stabilize or improve watershed condition
 D Improve riparian habitat
 E Maintain or improve winter range for mule deer and/or antelope
 F Maintain or improve sage grouse habitat
 G Increase availability of livestock forage

^{3/} Grazing Systems
 RR rest rotation
 DR deferred rotation
 R rotation
 D deferred
 E early
 S/S spring/summer
 S/S/F spring/summer/fall
 S/F spring/fall
 W winter
 SD short duration
 EX exclusion
 FFR fenced federal range

^{4/} Comments
 1. Grazing system dependent on project implementation or other work requiring funding not now available.
 2. Consultation continuing.
 3. Grazing system dependent on change in forage allocation.
 4. Monitoring required.
 5. Grazing system changed as a result of consultation.

APPENDIX III

Range Improvements

Allotment No. & Name	B/C Ratio	Initial Ranking	Fences (miles)	Spring Devel.	Pipeline (Miles)	Wells	Reservoirs	Water-holes	Spray/Seed (acres)	Burn/Seed (acres)	Plow/Seed (acres)	Spray Only (acres)	Burn Only (acres)	Chain (acres)	Juniper Control (acres)	Cost/ thousand dollars
0001 ALASKA PACIFIC	1.3	12	0	0	0	0	1	0	0	0	0	0	0	0	0	5.9
0003 HAMPTON	1.5	-	0	0	7	0	0	2	0	2700	0	0	1500	0	0	104.2
0004 MINERS FLAT	1.0	-	0	0	0	0	1	0	0	0	0	0	200	0	0	6.8
0006 POST RIVER	-	-	0	0	0	0	0	0	0	0	0	0	0	0	0	0
0007 RIVER	-	-	0	0	0	0	0	0	0	0	0	0	0	0	0	0
0009 COLD SPRINGS	4.1	-	0	0	0	0	4	0	0	0	0	0	0	0	0	27.6
0012 WINDMILL	-	-	0	0	0	0	0	0	0	0	0	0	0	0	0	0
0013 SHEEP MTN. COMM	-	-	0	1	0	0	0	0	0	0	0	0	0	0	0	4.0
0014 SHEEP MTN. INDV.	-	-	0	0	0	0	0	0	0	0	0	0	0	0	0	0
0016 INDIAN CREEK	-	14	0	0	0	0	0	0	0	0	0	0	0	0	0	0
0017 BONNIEVIEW	-	-	0	0	0	0	0	0	0	0	0	0	0	0	0	0
0018 JUNIPER SPRINGS	-	16	0	0	0	0	0	0	0	0	0	0	0	0	0	0
0019 IBEX BUTTE	1.1	3	3.2	0	6	0	0	0	0	3000	0	0	2100	0	0	99.2
0020 LOWER 12 MILE TB	1.1	2	0	0	3.5	0	0	0	0	0	0	0	2815	0	0	34.1
0021 MID FK 12MILE CR	-	-	0	0	0	0	0	0	0	0	0	0	0	0	0	0
0022 LAUGHLIN	1.5	10	12	0	0	0	1	0	0	0	0	0	880	0	0	12.9
0023 ANGELL	3.8	11	0	0	0	0	0	0	0	0	0	0	265	0	0	1.4
0024 UPPER BUCK CREEK	-	-	0	0	0	0	0	0	0	0	0	0	0	0	0	0
0025 BUCK CREEK FLAT	1.5	8	0	0	0	0	0	0	0	0	0	0	2550	0	0	16.0
0026 HUMPHREY	-	-	0	0	0	0	0	0	0	0	0	0	0	0	0	0
0027 UPPER POCKET COM	1.8	-	0	0	0	0	1	0	0	0	0	0	0	0	0	5.9
0028 FERIAN	-	-	0	0	0	0	0	0	0	0	0	0	0	0	0	0
0029 JIMMY MCCUEN	-	-	0	0	0	0	0	0	0	0	0	0	0	0	0	0
0033 CONGLETON	-	-	0	0	0	0	0	0	0	0	0	0	0	0	0	0
0034 LOWER POCKET COM	-	-	0	0	0	0	0	0	0	0	0	0	0	0	0	0
0035 BULGER CREEK	-	-	0	0	0	0	0	0	0	0	0	0	0	0	0	0
0036 DELORE	-	-	0	0	0	0	0	0	0	0	0	0	0	0	0	0
0037 FOSTER, V.	-	-	0	0	0	0	0	0	0	0	0	0	0	0	0	0
0038 CAVE	1.4	9	0	0	0	0	1	0	0	0	0	0	709	0	0	11.9
0039 PAULINA	-	-	0	0	0	0	0	0	0	0	0	0	0	0	0	0
0041 LAYTON	-	-	0	0	0	0	0	0	0	0	0	0	0	0	0	0
0042 OWENS WATER COMM	3.1	7	0	1	0	0	1	0	0	0	0	0	0	0	1050	16.7
0043 BARNEY BUCKCRK.	2.5	6	0	0	0	0	0	0	0	0	0	0	1726	0	0	16.5
0044 G. I.	1.4	5	12.5	1	7	1	0	0	0	5750	0	0	17395	0	0	302.8
0045 EAST MAURY	3.7	13	0	1	0	0	0	0	0	0	0	0	873	0	0	7.9
0047 LISTER	6.7	-	0	0	0	0	1	0	0	0	0	0	0	0	0	5.9
0048 DURGIN	-	-	0	0	0	0	0	0	0	0	0	0	0	0	0	0
0049 MCCULLOUGH	-	-	0	0	0	0	0	0	0	0	0	0	0	0	0	0
0050 RABBIT VALLEY	1.8	-	.25	0	0	0	2	0	0	0	0	0	0	0	0	15.3
0051 PAULINA CREEK	1.4	-	0	0	0	0	1	0	0	0	0	0	0	0	0	5.9
0052 MILLER	-	-	0	0	0	0	0	0	0	0	0	0	0	0	0	0
0053 NORTH FORK	2.2	-	0	1	0	0	1	0	0	0	0	0	0	0	0	12.3
0054 BEAVER CREEK	.4	-	0	0	0	0	1	0	0	0	0	0	0	0	0	5.9
0056 DAGIS LAKE	3.1	-	0	0	0	0	2	0	0	0	0	0	1280	0	0	16.3
0058 COYOTE SPRINGS	2.2	-	0	0	0	0	1	0	0	0	0	0	893	0	0	9.9
0059 DRY LAKE	-	-	0	0	0	0	0	0	0	0	0	0	0	0	0	0
0060 FLAT TOP BUTTE	-	15	0	0	0	0	0	0	0	0	0	0	0	0	0	0
0062 BENNETT FIELD	-	-	0	0	0	0	0	0	0	0	0	0	0	0	0	0
0064 CAMP CREEK COMM.	0.9	4	3.5	0	3	0	2	0	0	0	0	0	1600	0	3900	81.9
0066 BUTLER	-	-	0	0	0	0	0	0	0	0	0	0	0	0	0	0
0069 INDIAN	-	-	0	0	0	0	0	0	0	0	0	0	0	0	0	0
0070 CLOVER CREEK	3.3	1	1.8	0	0	0	1	0	0	0	0	0	0	0	0	14.2
0071 COFFEE BUTTE	1.3	-	3.0	0	0	0	0	0	0	0	0	0	0	0	0	8.3
0072 MILTENBERGER	4.8	-	0	0	0	0	0	0	0	0	0	0	0	0	170	1.0
0075 WEIGAND	-	-	0	0	0	0	0	0	0	0	0	0	0	0	0	0
0076 WEST PINE CREEK	-	-	0	0	0	0	0	0	0	0	0	0	0	0	0	0
5001 WHITAKER	-	-	0	0	0	0	0	0	0	0	0	0	0	0	0	0
5002 SANOWSKI	-	-	0	0	0	0	0	0	0	0	0	0	0	0	0	0
5003 BROADDUS- CARTER	-	-	0	0	0	0	0	0	0	0	0	0	0	0	0	0
5004 LAMB	-	-	0	0	0	0	0	0	0	0	0	0	0	0	0	0
5006 EMMRICH	-	-	0	0	0	0	0	0	0	0	0	0	0	0	0	0
5007 HARSCH	0	-	0	0	0	0	0	0	0	50	0	0	0	0	280	2.1
5010 HARRINGTON	0.5	-	0	0	0	0	0	0	0	20	0	0	0	0	20	.4
5018 WIERLESKE	1.9	-	0	0	0	0	0	0	0	100	0	0	0	0	150	2.2
5022 AIRPORT	1.3	-	0	0	0	0	0	0	0	40	0	0	0	0	100	1.1
5024 COUCH	-	-	0	0	0	0	0	0	0	0	0	0	0	0	0	0
5029 CLAYPOOL	-	-	0	0	0	0	0	0	0	0	0	0	0	0	0	0
5030 KEYSTONE	-	-	0	0	0	0	0	0	0	0	0	0	0	0	0	0
5031 MAYFIELD- HARRIS	0.6	-	0	0	0	0	0	0	0	0	0	0	0	0	250	1.2
5032 BARRETT	-	-	0	0	0	0	0	0	0	0	0	0	0	0	0	0
5050 GREY BUTTE	1	-	0	0	0	0	0	0	0	175	0	0	0	0	200	3.6
5051 SHERWOOD CANYON	0.8	-	0	0	0	0	0	0	0	100	0	0	0	0	300	4.5
5052 SMITH ROCK	0.6	-	0	0	0	0	0	0	0	25	0	0	0	0	75	1.1
5061 MCWEIZZ	-	-	0	0	0	0	0	0	0	0	0	0	0	0	0	0
5064 WILLIAMS	0.1	-	0	0	2	0	0	0	0	0	0	0	0	0	100	8.0
5065 LOWER BRIDGE	0.4	-	6	0	6	0	0	0	0	400	0	0	0	0	1200	47.0
5066 PINE RIDGE	2.5	-	0	0	0	0	0	0	0	0	0	0	0	0	80	1.0
5067 FISHER	-	-	0	0	0	0	0	0	0	0	0	0	0	0	0	0
5068 STEVENS- FREMONT	-	-	0	0	0	0	0	0	0	0	0	0	0	0	0	0
5069 SOUAW CREEK	-	-	0	0	0	0	0	0	0	0	0	0	0	0	0	0
5070 LAFOLLETTE BUTTE	0.3	-	7	0	4	0	0	0	0	225	0	0	0	0	700	38.0
5071 ODIN FALLS	-	-	10	0	0	0	0	0	0	0	0	0	0	0	0	23.0
5072 STRUSS	0.3	-	5	0	2	0	0	0	0	40	0	0	0	0	300	26.0
5073 CLINE BUTTE	0.8	17	0	0	6	0	0	0	0	450	0	0	0	0	900	32.0
5074 FRYREAR BUTTE	1.5	16	7	0	4	0	0	0	0	225	0	0	0	0	700	37.0
5075 DESERT SPRINGS	2	-	0	0	0	0	0	0	0	250	0	0	0	0	400	4.8
5078 HOME RANCH	1	23	0	0	3	0	0	0	0	200	0	0	0	0	750	17.0
5079 WHISKEY STILL	0.6	-	0	0	2	0	0	0	0	200	0	0	0	0	200	11.0
5080 MASTON	0.5	-	2	0	3	0	0	0	0	260	0	0	0	0	500	22.0
5081 PAULUS	-	-	0	0	0	0	0	0	0	0	0	0	0	0	0	0
5082 BULL FLAT	-	-	0	0	0	0	0	0	0	0	0	0	0	0	0	0

Allotment No. & Name	B/C Ratio	Initial Ranking	Fences (miles)	Spring Devel.	Pipeline (Miles)	Wells	Reser-voirs	Water-holes	Spray/Seed (acres)	Burn/Seed (acres)	Plow/Seed (acres)	Spray Only (acres)	Burn Only (acres)	Chain (acres)	Juniper Control (acres)	Cost/ thousand dollars
5086 LONE PINE CANYON	-	-	0	0	0	0	0	0	0	0	0	0	0	0	0	0
5088 BURNS MONTGOMERY	-	-	0	0	0	0	0	0	0	0	0	0	0	0	0	0
5089 KNOCHE	1	-	0	0	0	0	0	0	0	0	0	0	0	0	90	1.0
5090 ZEMLIKA	-	-	0	0	0	0	0	0	0	0	0	0	0	0	0	0
5092 RED CLOUD	4	-	0	0	0	0	0	0	0	0	0	0	0	0	175	8.5
5093 CRONIN	3	-	0	0	0	0	0	0	0	30	0	0	0	0	60	1.0
5094 BROWN	-	-	0	0	0	0	0	0	0	0	0	0	0	0	0	0
5096 FOSTER	0	-	0	0	0	0	0	0	0	25	0	0	0	0	25	1.0
5097 RUSSELL	1.7	-	0	0	0	0	0	0	0	0	0	0	0	0	100	1.0
5107 CAIN FIELDS	-	-	0	0	0	0	0	0	0	0	0	0	0	0	0	0
5108 ZELL POND	0	-	0	0	0	0	0	0	0	0	0	0	0	0	300	1.0
5109 HOHNSTEIN- TATTI	0.7	-	2	0	5	0	0	0	0	350	0	0	0	0	700	33.0
5110 BRUCKERT	-	-	0	0	0	0	0	0	0	0	0	0	0	0	0	0
5111 COOK	-	-	0	0	0	0	0	0	0	0	0	0	0	0	0	0
5112 DRIVEWAY	1.2	-	0	0	0	0	0	0	0	500	0	0	0	0	750	11.0
5113 HACKER- HASSING	0.3	-	2	0	4	0	0	0	0	150	0	0	0	0	700	18.0
5114 WEIGAND	0.2	-	1.5	0	3	0	0	0	0	100	0	0	0	0	250	18.0
5115 ALLEN	0.3	-	1.5	0	3	0	0	0	0	250	0	0	0	0	500	24.0
5116 REDMOND AIRPORT	0.1	-	0	0	5	0	0	0	0	200	0	0	0	0	700	24.0
5117 PIPELINE	0.4	-	0	0	8	0	0	0	0	300	0	0	0	0	500	35.0
5118 CRENSHAW	0.7	-	1.5	0	6	0	0	0	0	600	0	0	0	0	1000	38.0
5119 BLACKROCK	-	-	0	0	0	0	0	0	0	0	0	0	0	0	0	0
5120 HUTTON	0.4	-	0	0	3	0	0	0	0	250	0	0	0	0	500	20.0
5121 OERTLE	0.3	-	0	0	2	0	0	0	0	100	0	0	0	0	250	9.0
5122 HOWARD	0.7	-	0	0	0	0	0	0	0	150	0	0	0	0	200	3.2
5124 SMEAD	1.4	-	0	0	0	0	0	0	0	0	0	0	0	0	500	2.0
5125 MAYFIELD POND	0.5	-	0	0	2	0	0	0	0	200	0	0	0	0	500	13.0
5127 POWELL BUTTE	0.6	-	3	0	11	0	0	0	0	500	0	0	0	0	1600	64.0
5130 PILOT BUTTE	1.9	-	0	0	0	0	0	0	0	150	0	0	0	0	800	11.0
5131 MCCLELLAN	0	-	0	0	0	0	0	0	0	0	0	0	0	0	350	3.5
5133 LONG HOLLOW	0.7	-	0	0	0	0	0	0	0	0	0	0	0	0	300	4.5
5134 STEARNS	1.2	14	6	0	9	0	0	0	0	1000	0	0	0	0	3000	78.0
5135 DRY CREEK	3.2	-	0	0	0	0	0	0	0	300	0	0	0	0	4000	25.0
5136 DAVIS	0.5	-	5.5	0	0	0	0	0	0	250	0	0	0	0	2000	26.0
5137 PRINEVILLE DAM	21.7	26	0	0	0	0	0	0	0	120	0	0	0	0	1000	6.8
5138 PLATEAU	0.7	27	5	0	8	0	0	0	0	200	0	0	0	0	1000	48.0
5139 DUNHAM	2.3	6	5	0	5	0	0	0	0	1000	0	0	0	0	2750	62.0
5140 SALT CR. - ALKALI	1.2	13	13	8	10	0	0	0	0	800	0	0	0	0	2500	89.0
5141 SANFORD CREEK	2.6	2	7	0	1	0	0	0	0	800	0	0	0	0	2000	42.0
5142 CAREY	1.4	18	2.5	0	0	0	0	0	0	400	0	0	0	0	120	12.0
5145 EAGLE RK.-BAILEY	1.2	21	6	0	3	0	0	0	0	1000	0	0	0	0	1000	45.0
5149 BEOLETO	0.2	-	0	0	0	0	0	0	0	0	0	0	0	0	300	3.0
5176 MCCABE	-	-	0	0	0	0	0	0	0	0	0	0	0	0	0	0
5177 REYNOLDS	7	-	0	0	0	0	0	0	0	0	0	0	0	0	300	2.0
5178 GRIZZLY MTN.	0	-	0	0	0	0	0	0	0	0	0	0	0	0	325	3.0
5179 LYTLE CREEK	0	-	2	0	0	0	0	0	0	0	0	0	0	0	30	5.0
5180 GOLDEN HORSESHOE	0.7	-	0	0	0	0	0	0	0	60	0	0	0	0	80	1.3
5182 F. JONES	2.8	-	0	0	0	0	0	0	0	160	0	0	0	0	300	5.4
5183 RAIL HOLLOW	-	-	0	0	0	0	0	0	0	0	0	0	0	0	0	0
5198 LAIER- GOVE	-	-	0	0	0	0	0	0	0	0	0	0	0	0	0	0
5201 ALFALFA MKT.	0.2	-	1.5	0	3	0	0	0	0	150	0	0	0	0	350	20.0
5204 SINCLAIR	0	-	0	0	0	0	0	0	0	100	0	0	0	0	400	3.5
5206 ARNOLD CANAL	0	-	0	0	0	0	0	0	0	200	0	0	0	0	400	5.0
5207 MICHAELS	0.3	-	3	0	1	0	0	0	0	250	0	0	0	0	750	20.0
5208 BARLOW CAVE	0.7	24	5	0	10	0	0	0	0	700	0	0	300	0	500	70.0
5209 LAVA BEDS COMM.	0.6	-	7	0	9	0	0	0	0	600	0	0	400	0	1000	66.1
5210 HORSE RIDGE	1.4	19	1	0	16	0	0	0	0	2000	0	3500	0	0	500	134.0
5211 PINE MOUNTAIN	0.8	-	0	0	3	0	0	0	1000	500	0	500	0	0	0	49.0
5212 MILLICAN	2	5	6	0	35	0	0	0	0	2300	0	500	0	0	3000	191.0
5213 RAMBO	0.9	-	6	0	8	0	0	0	200	300	0	500	0	0	2000	71.0
5214 WILLIAMSON CREEK	2.2	25	0	0	7	0	0	0	400	600	0	0	0	0	1500	36.0
5215 COATS	0.8	-	0	0	2	0	0	0	0	580	0	2000	420	0	400	46.0
5216 GRIEVE	-	-	0	0	0	0	0	0	0	0	0	0	0	0	0	0
5229 KLOOTCHMAN	1.4	-	0	0	0	0	0	0	0	0	0	0	0	0	140	0.7
5231 WEST BUTTE	1.3	20	0	0	4	0	0	0	0	1000	0	1000	0	0	9000	82.0
5232 NYE	2.1	8	4	0	4	0	0	0	0	1000	0	0	0	0	2500	52.0
5233 SCOTT	2.6	7	3.5	0	2	0	0	0	0	300	0	200	0	0	2500	36.0
5234 HAUGHTON	1.7	10	6	0	16	0	0	0	0	0	0	2000	0	0	8000	136.0
5235 MOFFITT	1.2	3	17	0	19	0	0	0	0	3000	0	6000	3000	0	0	246.0
5236 BEAR CREEK	1.1	15	0	0	3	0	0	0	0	100	0	0	0	0	350	14.0
5237 BROTHERS	1.3	4	0	0	19	0	0	0	0	1775	0	4000	4725	0	0	177.0
5238 ZX	1.2	12	18	0	74	0	0	0	0	4000	0	8000	13000	0	5000	570.0
5239 GRASSY BUTTE	0.8	-	5	0	5	0	0	0	0	1250	0	2000	2750	0	0	87.0
5240 FEHRENBACHER	0.8	-	4.5	0	2	0	0	0	0	700	0	300	0	0	0	33.0
5241 RICKMAN-MCCORMAC	1.6	9	1	0	13	0	0	0	0	2000	0	0	0	0	5000	96.0
5242 SPRING CREEK	1.1	22	6	0	4	0	0	0	0	400	0	0	0	0	1000	41.0
5243 BRIGHT	0.2	-	2	0	3	0	0	0	0	500	0	1000	500	0	0	38.0
5244 IMPERIAL	1	-	3	0	7	0	0	0	1600	1700	0	2000	0	0	0	109.0
5245 RAM LAKE	1.4	11	4	0	6	0	0	0	0	1400	0	2100	0	0	4500	101.0
5246 HATFIELD	1	-	0	0	0	0	0	0	0	0	0	0	0	0	60	1.0
5247 LIZARD CREEK	0.6	-	2	0	2	0	0	0	0	300	0	0	600	0	1500	39.0
5248 POTHOOK	3.1	-	0	0	0	0	0	0	0	400	0	0	0	0	2200	28.0
5249 MCCORMACK HOME R	1.3	-	0	0	0	0	0	0	0	250	0	0	0	0	1000	11.0
5250 COFFELT	1.7	-	0	0	1	0	0	0	0	120	0	0	0	0	400	9.0
5251 96 RANCH	3.1	1	2	0	5	0	0	0	0	700	0	0	0	0	5000	69.0
5252 MEISNER	-	-	0	0	0	0	0	0	0	0	0	0	0	0	0	0
5254 BARBWIRE	0.7	-	3	0	3	0	0	0	0	650	0	1000	850	0	0	50.0
9999 UNALLOTTED	-	-	0	0	0	0	0	0	0	0	0	0	0	0	0	0

1/ Two sets of priority ranking are shown. One for the Central Oregon Resource Area (Allotments 0001 thru 0076) and one for the Deschutes Resource Area (Allotments 5001 thru 5254).

☐ - Improve (I) category allotments.

**Bureau of Land Management
Library
Bldg. 50, Denver Federal Center
Denver, CO 80225**

Form 1270-3
June 1984

BORROWER'S C
SF 85.35 .07 B76 1982H
Rangeland Program Summ
(RPS)

DATE LOANED	BORROWER

USDI - DLM

U.S. Department of the Interior

Bureau of Land Management

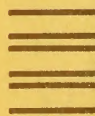
Prineville District Office

P.O. Box 550

Prineville, OR 97754

OFFICIAL BUSINESS

PENALTY FOR PRIVATE USE, \$300



FIRST-CLASS MAIL
POSTAGE & FEES PAID
U.S. DEPARTMENT OF THE INTERIOR
PERMIT NO. G-76

U.S. Department of the Interior
Bureau of Land Management
Denver Service Center Library
Building 50
Denver, CO 80225